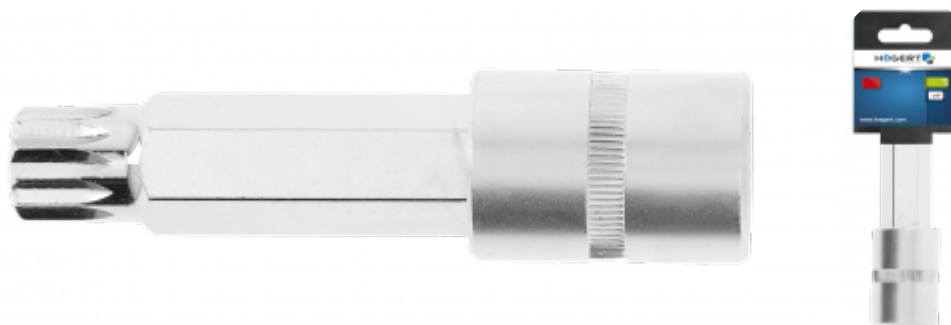


## PRODUCT INFORMATION SHEET

### Pin wrench spline M17 1/2" 100mm



#### Product description

Indispensable tool in a car or mechanical workshop.

#### Characteristics

- size 1/2"
- socket made from high-quality alloy steel
- bit made of high quality S2 alloy steel
- drop-forged
- manufactured in accordance with the European standard DIN 3120
- hardness 58-60 HRC.

#### Technical data

			
HT1S597	5902801296345	1	4096

Högert Technik GmbH, Pariser Platz 6a, 10117 Berlin, Deutschland

Producent/ Manufacturer/ Hersteller/ Произведено для:  
PL GTV Poland S.A., ul. Przejazdowa 21 05-800 Pruszków, Polska/ Poland/ Polen/ Польша

Importer/ Импортёр:  
HR GTV Croatia d o.o.; Kovinska 4s, 10000 Zagreb, Hrvatska

Distributor:  
ES GTV España Herrajes, E Iluminación, S.L., Avenida Aragón 308, 46021 Valencia, Spain

CZ GTV Czech Distribution s.r.o., CTPark Ostrava, Na Rovince 879, 720 00 Ostrava Hrabová