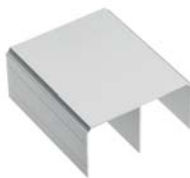







Horní kolejnice  
Horná kolajnica  
Felső vezetés  
Sina superioara



|  |  L<br>mm |  |  |
|---|---|---|---|
| A-TG-170-05   | 1700  | hliník / hliník / alumínium / aluminiu  |  |
| A-TG-170-10   |   | bílá / biela / fehér / alb  |   |
| A-TG-170-20M  |   | černá / čierna / fekete / negru   |   |
| A-TG-170-90   |   | šampaňská / šampanská / pezsgő / sampanie   |   |
| A-TG-235-05   | 2350  | hliník / hliník / alumínium / aluminiu  |   |
| A-TG-235-10   |   | bílá / biela / fehér / alb  |   |
| A-TG-235-20M  |   | černá / čierna / fekete / negru   |   |
| A-TG-235-90   |   | šampaňská / šampanská / pezsgő / sampanie   |   |
| A-TG-300-05   | 3000  | hliník / hliník / alumínium / aluminiu  |   |
| A-TG-300-10   |   | bílá / biela / fehér / alb  |   |
| A-TG-300-20M  |   | černá / čierna / fekete / negru   |   |
| A-TG-300-90   |   | šampaňská / šampanská / pezsgő / sampanie   |   |
| A-TG-405-05   | 4050  | hliník / hliník / alumínium / aluminiu  |   |
| A-TG-405-10   |   | bílá / biela / fehér / alb  |   |
| A-TG-405-20M  |   | černá / čierna / fekete / negru   |   |
| A-TG-405-90   |   | šampaňská / šampanská / pezsgő / sampanie   |   |
| A-TG-600-05   | 6000  | hliník / hliník / alumínium / aluminiu  |   |
| A-TG-600-10   |   | bílá / biela / fehér / alb  |   |
| A-TG-600-20M  |   | černá / čierna / fekete / negru   |   |
| A-TG-600-90   |   | šampaňská / šampanská / pezsgő / sampanie   |   |

hliník  
hliník  
alumínium  
aluminiu

